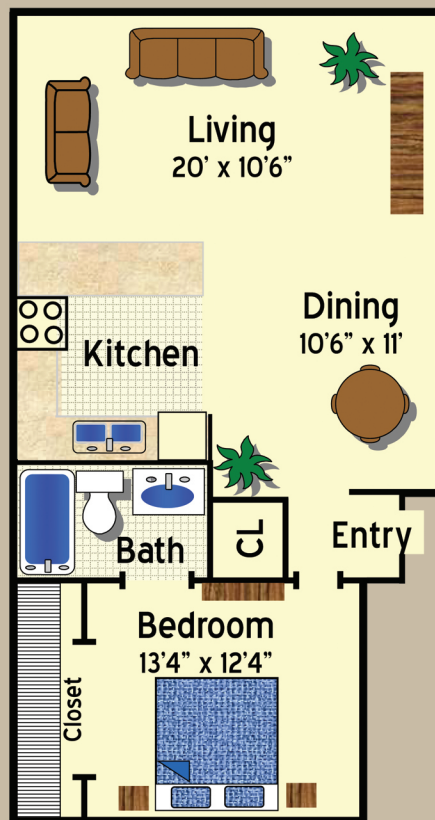




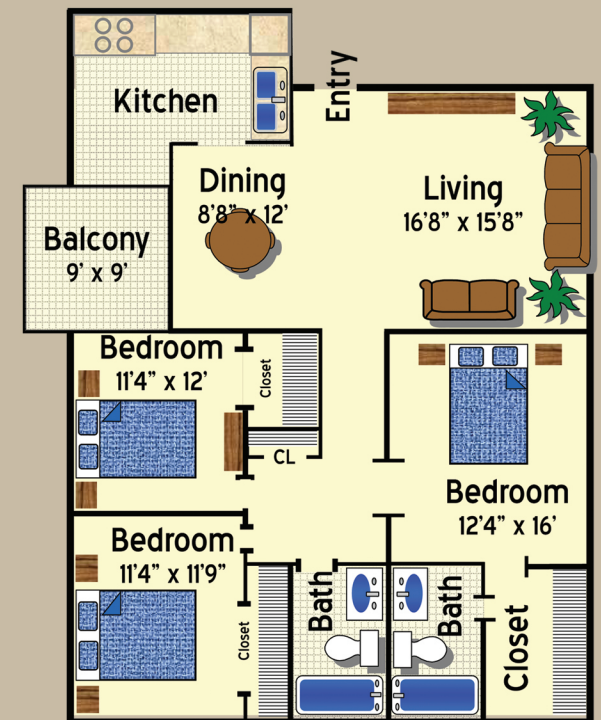
2 Bedroom / 1 Bath
975 Sq. Ft. \$ _____



1 Bedroom / 1 Bath
733 Sq. Ft. \$ _____



2 Bedroom / 2 Bath
1117 Sq. Ft. \$ _____



3 Bedroom / 2 Bath
1334 Sq. Ft. \$ _____



Features

- Rent includes: Expanded Basic Cable, Water/Sewer/Trash Removal, Pest Control and Parking
- Great Location- Convenient to Shopping & Educational Institutions
- On Site Management; 24-hr Emergency Maintenance
- Pets Welcome (restrictions may apply)
- Flexible Lease Terms available
- Credit/Debit Cards Accepted
- Spacious Laundry Facilities
- Abundant Closet Space
- Two Sparkling Pools
- Huge Riverfront Apartments
- Riverfront Views
- Ideal Beach Street Location
- Individual Patio/Balcony
- Washer/Dryer Connections Available in our 3/2 Floorplan
- Open Floorplans
- Car Wash Center
- Monthly Resident Activity

Notes

Welcome Home

Sailpoint Bay Apartments

1025 S. Beach Street

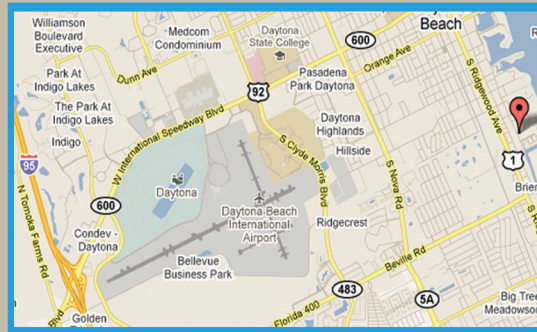
Daytona Beach, FL 32114

p. (386) 252-6319 f. (386) 252-5407

Email: SailpointBay@cpsinc.org

www.sailpointbayapartments.com

Go East on International Speedway (US 92). Turn right on Beach Street. Go South 2 miles, Sailpoint Bay is on the left.



Come Live With Us



Continental
Property
Services, Inc.

www.cpsdaytona.com



386.252.6319

1025 S. Beach Street

Daytona Beach , FL

www.sailpointbayapartments.com

www.cpsdaytona.com

